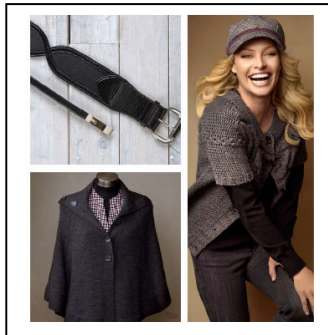


Winter Trends

- Feminine & Masculine: Soft fabrics and feminine features teamed with stronger, structured lines (eg lace tops/dresses, soft folds, frills with denim, leather or tailored suit, Military Style Jackets).
- Plaids: Skirts & Jackets (sexy, sweet, rough or edgy). From the modern, classic styles such as pencil skirts and shirts to a subdued palette of muted greys, blues, greens and browns. Checked shirts, scarves and caps
- Bohemian: Indian / layered skirts with multi coloured necklaces; clothing layers; encrusted vests.
- Cinch it in: Jackets and Belted Cardigans. Mix and match using 'your' colours.
- Boots and tights; Layers to take you from indoors to out...

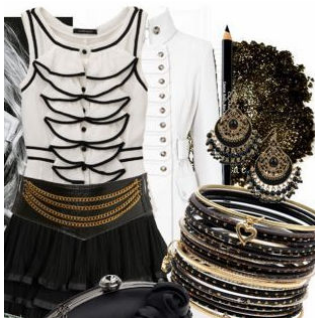
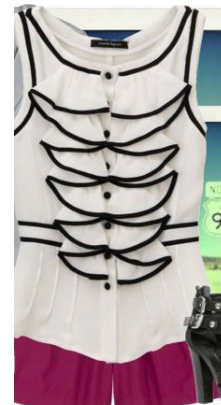


Sportscraft Ideas



Creative You!

Take a top and see where your creative imagination takes you...



Colour Savvy

As you saw in your **Colour Consultation**, wearing your best colours (especially next to your face) makes you look younger and healthier, whilst exuding a healthy facial glow. Using your swatch to build a well co-ordinated 'mix and match' wardrobe also extends your wardrobe options (and creative possibilities), whilst making the \$\$\$ go further!

Ask yourself

- Is it my **right colour**?
- Do the colours match my right **contrast levels**?

Colour Contrast

Remember, your contrast levels are as important as wearing your right '**colours**'. See your '**Colour Profile**' manual to check your Contrast Level, including the 'Contrast' examples towards the end of the booklet.

Which Clothing Sets Match the 'Dusky Cool Deep' Colour Profile?



A Answers last page! Try to explain 'why'



F



B



E



C



D



3 Tips...

- Wear your **right colours and styles**
- Ensure your garments fit you properly
- Wear styles which accentuate your best style

Remember to...

- Use your swatch to check the clothes in your wardrobe, and
- When you're shopping for new garments

Forthcoming Events

TAFE Colour and Style WorkShops

I will be holding the following Colour and Style workshops at SWAN TAFE, Victoria Park:

W4333 WS PERSONAL STYLE ANALYSIS Saturday 6 June, 09 9am – 3pm

W4333 WS PERSONAL COLOUR ANALYSIS Saturday 13 June, 09 9am – 3pm

To register: Call **SWAN TAFE: 9267 7888** or Email: ace.centre@swantafe.wa.edu.au

Concession discounts may apply, from TAFE

Answers to Quiz

From Previous Page

Which Clothing Sets Match the 'Dusky Cool Deep' Colour Profile?

Although not quite as good as having the actual colour swatch, hopefully you could see the colours in the profile.

Answer:

A, B & C reflect the colours of the 'Dusky Cool Deep' colour profile. **D** is a universal 'Cool' combination so will suit any Cool Profile, including the 'Dusky Cool Deep' colour profile.

The 'Dusky Cool Deep' profile colours have a 'muted' or 'duskiness' about them.

Colours which did not match:

E – Orange is definitely a 'warm' colour; as with the browns and earthy greens

F – The 'brightness' and 'coolness' of the aqua blue does not fit with the 'Dusky Cool Deep' profile.